

2024 EDITION



INDUSTRIAL - OTR - FORKLIFT TIRES

petlas
TRACK OF TRUST

Headquarters - Factory

Petlas Tire Industry and Trade
Kindam Mahallesi Ankara - Kayseri Caddesi
No: 2/1 Kırşehir / TÜRKİYE
T: +90 386 252 65 50 • F: +90 386 252 65 70

Int. Sales & Marketing

Petlas Tire Industry and Trade Ako Kule
Söğütözü Mh. 2178. Cd. No: 6
06530 Ankara/TÜRKİYE
T. +90 312 309 30 30 • F: +90 312 309 22 66

Petlas Tire USA

1111 E. Lincolnway STE 205
Cheyenne, WY 82001 USA

www.petlas.com
Made in TÜRKİYE



petlas
TRACK OF TRUST

RADIAL INDUSTRIAL TRACTION



Ptx ND31 (R-4)



Ptx ND33 (R-4)



Ptx RD22 (G-2)



Ptx RD22 (G-2)



Ptx RD31 (L-3/G-3)

LOADER RADIAL

EARTHMOVER / LOADER RADIAL



Ptx TD41 (L-4)



Ptx RD31 (E-3/L-3)



Ptx HD41 (E-4/L-4)



Ptx RD34 (E-3)



Ptx RD35 (E-3)

EXCAVATOR

FORKLIFT



NB-38 (E-3)



HL-10 (PNEUMATIC)



HL-30 (PNEUMATIC)



HL-40 (PNEUMATIC)



SOLID ST (SOLID)

COMPACTOR

SKID STEER

INDUSTRIAL TRAC.



FLT2 (R-3)



PC-1 (C-1)



IND-15 NHS (R-4)



IND-35 NHS



IND-40 NHS



TD-45 (F-3)

INDUSTRIAL TRACTION



IND-30 (R-4)



IND-15 (R-4)



IND-25 (R-4)



TA-60 (I-3)



IND-5 (R-1)



PL-2 (L-2)

GRADER

EARTHMOVER



PG-200 (G-2)



PG-300 (G-2)



NB-57 (E-3)



NB-60 (E-3)

LOADER

PORT APPLICATION



NB-57 (L-3)



NB-60 (L-3)



NB-70 (L-3)



NB-70 (L-4)



C+CARRIER (IND-4)



C+CARRIER SMOOTH (IND-4S)

Ptx ND31 (R-4)

Ptx ND31 (R-4) tire has strong radial casing and steel belted construction. It is developed for construction equipment to be used in the areas of agriculture and construction. The directional tread pattern provides excellent traction, longevity, resistance to damage and high carrying capacity.

Ptx ND31 (R-4) is the right response to agro-industrial heavy-duty needs. It is suitable for all digging and loading operations on vehicles such as telehandlers, compact loaders and backhoe loaders.



| TYRE SIZE | TT/TL | LOAD INDEX | SPEED INDEX |
|---------------------------------|-------|------------|-------------|
| 340/80 R18 (12.5/80 R18) | TL | 143 | A8/B |
| 340/80 R20 | TL | 138 | A8/B |
| 340/80 R20 | TL | 144 | A8/B |
| 480/80 R26 | TL | 167 | A8/B |
| 440/80 R28 (16.9 R28) | TL | 156 | A8/B |
| 400/70 R20 | TL | 149 | A8/B |
| 405/70 R20 | TL | 149 | A8/B |
| 460/70 R24 (17.5L R24) | TL | 159 | A8/B |

UNDER DEVELOPMENT

440/80 R24



Ptx ND33 (R-4)

Ptx ND33 (R-4) is developed and designed to offer perfect traction and long life for compact industrial vehicles such as compact loaders, backhoe loaders and telehandlers. Deep and wide lugs are carefully located on the tread to ensure perfect traction on hard or soft terrains. The wide tread profile provides a balanced feel on every condition and increases the tire's service life by avoiding irregular wear. Reinforced sidewalls offer maximum resistance against cuts and puncture while the steel belts under the tread improve the tire's durability and load capacity.



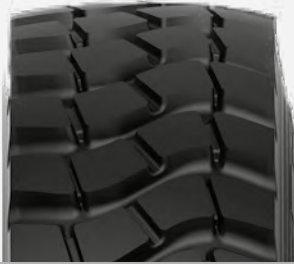
| TYRE SIZE | TT/TL | LOAD INDEX | SPEED INDEX |
|-------------------------------|-------|------------|-------------|
| 460/70 R24 (17.5L R24) | TL | 159 | A8/B |





Ptx RD22 (G-2)

Ptx RD22 (G-2) is an all steel radial tire that promises resistance to tears and wears in worksites and on challenging roads. Specially formulated tread compound and all steel carcass structure of Ptx RD22 (G-2) offer longevity. The non-directional pattern design delivers outstanding traction and grip in demanding conditions. Ptx RD22 (G-2) is designed especially for grader applications.



| TYRE SIZE | STAR RATING | TT/TL | LOAD INDEX | SPEED INDEX |
|-----------|-------------|-------|------------|-------------|
| 14.00 R24 | ★ | TL | 153 | A8 |



Ptx RD22 (L-2/E-2)

Ptx RD22 (L-2/E-2) is an all steel radial tire that promises resistance to tears and wears in worksites and on challenging roads. Specially formulated tread compound and all steel carcass structure of Ptx RD22 (L-2/E-2) offer longevity. The non-directional pattern design delivers outstanding traction and grip in demanding conditions. Ptx RD22 (L-2/E-2) is designed especially for grader applications.



| TYRE SIZE | STAR RATING | TT/TL | LOAD INDEX | SPEED INDEX |
|-----------|-------------|-------|------------|-------------|
| 14.00 R24 | ★★★ | TL | 153 | A8 |



Ptx RD31 (L-3/G-3)

Ptx RD31 (L-3/G-3) is an all steel radial OTR tire that offers ultimate resistance to all kind of damage and is designed to be used on loaders and motor graders.

Demonstrates efficient self-cleaning feature thanks to its special grooving geometry. Inter-located blocks keep their integrity on all kind of grounds. Specially designed tread compound minimizes cuts and punctures on semi rough ground conditions while simultaneously reducing heat generation to boost service life and improve wear performance.



| TYRE SIZE | STAR RATING | TT/TL | LOAD INDEX | SPEED INDEX |
|-----------|-------------|-------|------------|-------------|
| 17.5 R25 | ★ | TL | 176/153 | A2/A8 |



Ptx TD41 (L-4)

It is a high tread depth tire designed for wheel loaders. The tread pattern and carcass structure are especially designed for marble quarries and mine sites. With its specially developed tread mixture and reinforced heel structure, it provides high performance in fields where traction and grip are high.



| TYRE SIZE | STAR RATING | TT/TL | LOAD INDEX | SPEED INDEX |
|-----------|-------------|-------|------------|-------------|
| 26.5 R25 | ★★ | TL | 209 | A2 |
| 29.5 R25 | ★★ | TL | 216 | A2 |



Ptx RD31 (E-3/L-3)

Ptx RD31 (E-3/L-3) is an all steel radial OTR tire that offers ultimate resistance to all kind of damage and is designed to be used on loaders and articulated trucks.

Demonstrates efficient self-cleaning feature thanks to its special grooving geometry. Inter-located blocks keep their integrity on all kind of grounds. Specially designed tread compound minimizes cuts and punctures on semi rough ground conditions while simultaneously reducing heat generation to boost service life and improve wear performance.



| TYRE SIZE | STAR RATING | TT/TL | LOAD INDEX | SPEED INDEX |
|-----------|-------------|-------|------------|-------------|
| 17.5 R25 | ★★ | TL | 182/167 | A2/A8 |
| 20.5 R25 | ★★ | TL | 193/177 | A2/B |
| 23.5 R25 | ★★ | TL | 201/185 | A2/B |
| 26.5 R25 | ★★ | TL | 209/193 | A2/B |
| 29.5 R25 | ★★ | TL | 216/200 | A2/B |



Ptx HD41 (E-4/L-4)

It is especially designed for Articulated Haulers and can also be used in wheel loaders. It is a multi-purpose tire with high tread depth. It provides a long-lasting performance by providing excellent resistance to cuts and heat with its honeycomb-shaped block pattern structure and specially developed tread mixture.



| TYRE SIZE | STAR RATING | TT/TL | LOAD INDEX | SPEED INDEX |
|-----------|-------------|-------|------------|-------------|
| 26.5 R25 | ★★ | TL | 209/193 | A2/B |
| 29.5 R25 | ★★ | TL | 216/200 | A2/B |
| 23.5 R25 | ★★ | TL | 201/185 | A2/B |



Ptx RD34 (E-3)

Ptx RD34 is a durable E-3 construction equipment tire developed for scraper vehicles, offering a long life. It offers a long life with its completely steel carcass structure.



| TYRE SIZE | STAR RATING | TT/TL | LOAD INDEX | SPEED INDEX |
|-----------|-------------|-------|------------|-------------|
| 33.25 R29 | ★★ | TL | 209 | B |



Ptx RD35 (E-3)

Ptx RD35 tire designed to be used in articulated dump trucks. With its specially developed tread compound, it provides excellent resistance to cuts, and longevity.



| TYRE SIZE | STAR RATING | TT/TL | LOAD INDEX | SPEED INDEX |
|------------|-------------|-------|------------|-------------|
| 650/65 R25 | ★★ | TL | 180 | B |



NB-38 (E-3)

NB-38 is specially developed for road construction excavators. Its aggressive tread pattern delivers outstanding traction and enables excellent self-cleaning. Promises high resistance to cuts and tears and thus, ensures longevity thanks to its reinforced carcass structure.



| TYRE SIZE | PR | TT/TL | LOAD INDEX | SPEED INDEX |
|-----------|----|-------|------------|-------------|
| 7.50-20 | 10 | TT | 123/122 | B |
| 9.00-20 | 14 | TT | 140/137 | B |
| 10.00-20 | 16 | TT | 146/143 | B |



HL-10 (PNEUMATIC)

HL-10 is designed for general purpose tasks. Its strong carcass structure and bead construction provide high performance and durability against impacts.



| TYRE SIZE | PR | TT/TL | LOAD INDEX | SPEED INDEX |
|-----------|----|-------|------------|-------------|
| 4.00-8 | 8 | TT | 94 | A5 |
| 5.00-8 | 10 | TT | 111 | A5 |
| 18x7-8 | 16 | TT | 125 | A5 |
| 6.00-9 | 12 | TT | 121 | A5 |
| 21x8-9 | 14 | TT | 131 | A5 |
| 6.50-10 | 12 | TT | 125 | A5 |
| 23x9-10 | 20 | TT | 142 | A5 |
| 7.00-12 | 14 | TT | 134 | A5 |
| 27x10-12 | 14 | TT | 143 | A5 |
| 23x5-13 | 10 | TT | 121 | A5 |
| 8.15-15 | 14 | TT | 146 | A5 |
| 8.25-15 | 16 | TT | 149 | A5 |



HL-30 (PNEUMATIC)

HL-30 delivers high maneuverability thanks to its reinforced tread block pattern. Offers high performance on the field with its strong carcass structure and reinforced bead design. Provides excellent durability feature and resistance against cuts and wears.



REINFORCED



| TYRE SIZE | PR | TT/TL | LOAD INDEX | SPEED INDEX |
|-----------|----|-------|------------|-------------|
| 4.00-8 | 8 | TT | 94 | A5 |
| 5.00-8 | 10 | TT | 111 | A5 |
| 16x6-8 | 16 | TT | 113 | A5 |
| 18x7-8 | 16 | TT | 125 | A5 |
| 6.00-9* | 12 | TT | 121 | A5 |
| 21x8-9 | 14 | TT | 131 | A5 |
| 6.50-10* | 12 | TT | 125 | A5 |
| 23x9-10 | 20 | TT | 142 | A5 |
| 7.00-12* | 14 | TT | 134 | A5 |
| 27x10-12 | 14 | TT | 143 | A5 |
| 23x5-13 | 10 | TT | 121 | A5 |
| 7.50-15 | 14 | TT | 144 | A5 |
| 8.15-15* | 14 | TT | 146 | A5 |
| 250-15 | 20 | TT | 155 | A5 |
| 300-15 | 20 | TT | 164 | A5 |

* EXTRA DURABLE



HL-40 (PNEUMATIC)

HL-40 offers ultimate durability with its extra tread depth. Center reinforced block structure provides exceptional maneuverability especially while spot turnings. Resistant to cuts and chunking thanks to its strong carcass structure.



REINFORCED



| TYRE SIZE | PR | TT/TL | LOAD INDEX | SPEED INDEX |
|-----------|----|-------|------------|-------------|
| 6.00-9* | 12 | TT | 121 | A5 |
| 6.50-10* | 12 | TT | 125 | A5 |
| 7.00-12* | 14 | TT | 134 | A5 |
| 8.15-15* | 14 | TT | 146 | A5 |
| 8.25-15* | 16 | TT | 152 | A5 |

* EXTRA DURABLE



SOLID ST (SOLID)

SOLID ST is developed to offer extended service life and minimized maintenance costs for forklifts operating on even surfaces. The premium rubber compound provides excellent wear behavior and extreme resistance to cuts, chips and wear. The cushion layer ensures that toughness does not lead to compromises on operator's comfort and forklift's service life. Steel bead wires embedded in the hard base compound guarantees integrity by preventing the tire from rotating on the rim.



| TYRE SIZE | RIM | LOAD INDEX | SPEED INDEX | SPEED INDEX |
|-----------|----------|------------|-------------|-------------|
| 4.00-8 | 3.00-D | Q/N | 97 | A5 |
| 5.00-8 | 3.25I-8 | Q/N | 111 | A5 |
| 15x4.5-8 | 3.00D-8 | Q/N | 100 | A5 |
| 16x6-8 | 4.33R-8 | Q/N | 113 | A5 |
| 18x7-8 | 4.33R-8 | Q/N | 125 | A5 |
| 6.00-9 | 4.00E-9 | Q/N | 121 | A5 |
| 21x8-9 | 6.00E-9 | Q/N | 134 | A5 |
| 23x9-10 | 6.50F-10 | Q/N | 142 | A5 |
| 140/55-9 | 4.00-E | Q/N | 104 | A5 |
| 6.50-10 | 5.00F-10 | Q/N | 128 | A5 |
| 23x10-12 | 8.00G-12 | Q/N | 145 | A5 |
| 200/50-10 | 6.50F-10 | Q/N | 130 | A5 |
| 27x10-12 | 8.00G-12 | Q/N | 146 | A5 |
| 7.00-12 | 5.00S-12 | Q/N | 136 | A5 |
| 8.15-15 | 7.0-15 | Q/N | 142 | A5 |
| 8.25-15 | 6.5-15 | Q/N | 153 | A5 |
| 250-15 | 7.0-15 | Q/N | 153 | A5 |

Q: Quick

N: Normal

*For each tire size of the Solid ST forklift tires, there are two options: Quick Fit and Normal Fit.



FLT2 (R-3)

FLT2 (R-3) is specially designed for compactors applications. Delivers high impact resistance when used in paving applications. Offers outstanding longevity thanks to its strong carcass structure.



| TYRE SIZE | PR | TT/TL | LOAD INDEX | SPEED INDEX |
|-----------|----|-------|------------|-------------|
| 23.1-26 | 10 | TT | 158 | A8 |
| 23.1-26 | 12 | TL | 162 | A8 |
| 23.1-26 | 14 | TL | 166 | A8 |



PC-1 (C-1)

Suitable for industrial compacting roadbeds and rolling asphalt. Heat resistant smooth pattern design distributes the pressure equally on the road. Delivers high mileage performance and comfort riding.



IND-15 NHS (R-4)

Designed for general purpose use in construction applications. Delivers exceptional traction thanks to its directional pattern design and robust lugs. Strong carcass structure enhances resistance to cuts, tears and wears. Offers outstanding cost efficiency.



| TYRE SIZE | PR | TT/TL | LOAD INDEX | SPEED INDEX |
|-------------|----|-------|------------|-------------|
| 11.00-20 | 14 | TT | 165 | A2 |
| 13.0/80 R20 | - | TL | 164 | A3 |



| TYRE SIZE | PR | TT/TL | LOAD INDEX | SPEED INDEX |
|-------------|----|-------|------------|-------------|
| 10-16.5 NHS | 8 | TL | 131 | A3 |
| 12-16.5 NHS | 10 | TL | 142 | A3 |



IND-35 NHS

Skid steer tire solution for harsh off-road applications. Delivers enhanced durability, traction and side impact resistance. Offers excellent performance and value by reducing operating costs.



| TYRE SIZE | PR | TT/TL | LOAD INDEX | SPEED INDEX |
|--------------------|----|-------|------------|-------------|
| 10-16.5 NHS | 12 | TL | 138 | A3 |
| 12-16.5 NHS | 14 | TL | 147 | A3 |



IND-40 NHS

IND-40 NHS is a meticulously designed tire engineered for skid steers, aimed at enhancing performance in scrap yards, recycling facilities, and mining applications. IND-40 NHS not only meets but thrives in the toughest conditions, delivering unmatched performance in rugged environments.



| TYRE SIZE | PR | TT/TL | LOAD INDEX | SPEED INDEX |
|--------------------|----|-------|------------|-------------|
| 10-16,5 NHS | 12 | TL | 138 | A3 |
| 12-16,5 NHS | 14 | TL | 147 | A3 |



TD-45 (F-3)

It is developed for front axles of 2WD industrial tractors and compact earthmovers for the purpose of usage in agricultural areas and worksites. Moreover, it is multi-purpose, low-profile tire that can be used on trailers for on or off road. It provides resistance and longevity against to tears and wears on hard soil, asphalt, and concrete with its specially formulated tread compound and reinforced carcass structure.



| TYRE SIZE | PR | TT/TL | LOAD INDEX | SPEED INDEX |
|-----------|----|-------|------------|-------------|
| 11L-16 SL | 12 | TL | 116 | A8 |



IND-30 (R-4)

IND-30 is an R-4 pattern designed to provide ultimate traction and durability for compact loaders, backhoe loaders and telehandlers. Wide and deep lugs are purposefully located to maximize traction on challenging terrains and ensure maximum durability against cuts and damages. Guarantees consistent performance throughout the tire's long lifespan with wide tread profile that improves the tire's resistance against irregular wear. The number and angles of undertread plies are specifically determined to improve lateral stability.



| TYRE SIZE | PR | TT/TL | LOAD INDEX | SPEED INDEX |
|------------|----|-------|------------|-------------|
| 16.0/70-20 | 16 | TL | 156 | A8 |



IND-15 (R-4)

Designed for general purpose use in construction applications. Delivers exceptional traction thanks to its directional pattern design and robust lugs. Strong carcass structure enhances resistance to cuts, tears and wears. Offers outstanding cost efficiency.



| TYRE SIZE | PR | TT/TL | LOAD INDEX | SPEED INDEX |
|--------------|----|-------|------------|-------------|
| 10.0/75-15.3 | 12 | TL | 126 | A8 |
| 11.5/80-15.3 | 12 | TL | 135 | A8 |
| 10.5/80-18 | 12 | TL | 134 | A8 |
| 280/80-18 | 12 | TL | 134 | A8 |
| 14.5-20 | 14 | TT | 143 | D |
| 14.5-20 | 14 | TL | 143 | D |
| 405/70-20 | 14 | TT | 154 | A8 |
| 16.0/70-20 | 14 | TT | 154 | A8 |
| 16.0/70-24 | 14 | TL | 152 | B |
| 405/70-24 | 14 | TL | 152 | B |
| 23.1-26 | 14 | TL | 166 | A8 |
| 480/80-26 | 12 | TL | 156 | A8 |



IND-25 (R-4)

Specially designed for backhoe and telehandler applications. Offers ultimate resistance to cuts, tears, chips and chunks with its exceptional tread compound and wide lugs. Strong carcass structure ensures longevity.



| TYRE SIZE | PR | TT/TL | LOAD INDEX | SPEED INDEX | TYRE SIZE | PR | TT/TL | LOAD INDEX | SPEED INDEX |
|------------|----|-------|------------|-------------|-----------|----|-------|------------|-------------|
| 16.5/85-24 | 12 | TL | 149 | A8 | 14.5-20 | 14 | TT | 143 | D |
| 16.5/85-24 | 16 | TL | 156 | A8 | 14.5-20 | 14 | TL | 143 | D |
| 12.5/80-18 | 14 | TL | 146 | A8 | 16.9-24 | 12 | TL | 149 | A8 |
| 340/80-18 | 12 | TL | 142 | A8 | 16.9-24 | 14 | TL | 152 | A8 |
| 440/80-24 | 12 | TL | 149 | A8 | 19.5L-24 | 12 | TL | 151 | A8 |
| 480/80-26 | 14 | TL | 158 | A8 | 18.4-26 | 12 | TL | 156 | A8 |
| 440/80-28 | 12 | TL | 152 | A8 | 18.4-26 | 14 | TL | 158 | A8 |
| 16.0/70-20 | 14 | TL | 154 | A8 | 18.4-26 | 16 | TL | 160 | A8 |
| 16.0/70-20 | 14 | TL | 156 | A8 | 16.9-28 | 12 | TT | 152 | A8 |
| 405/70-20 | 16 | TL | 154 | A8 | 16.9-28 | 12 | TL | 152 | A8 |
| 405/70-24 | 14 | TL | 152 | B | 16.9-28 | 14 | TL | 156 | A8 |
| 16.0/70-24 | 14 | TL | 152 | B | | | | | |



TA-60 (I-3)

TA-60 (I-3) tire designed for heavy duty tractor applications. Reinforced carcass structure provides exceptional durability and ensures longevity. Features excellent self-cleaning properties and outstanding grip in challenging off the road conditions. The tread pattern provides excellent stability during operations.



| TYRE SIZE | PR | TT/TL | LOAD INDEX | SPEED INDEX |
|---------------|----|-------|------------|-------------|
| 15.5/80-24 RF | 12 | TL | 157/145 | A8 |
| 15.5/80-24 RF | 16 | TL | 163/151 | A8 |

RF=REINFORCED



IND-5 (R-1)

Suitable for small loader, backhoe and telehandler applications. The special tread design offers exceptional traction. Offers outstanding durability thanks to its special compound.



| TYRE SIZE | PR | TT/TL | LOAD INDEX | SPEED INDEX |
|-----------|----|-------|------------|-------------|
| 18.4-26 | 14 | TL | 145 | A8 |
| 16.9-30 | 14 | TL | 153 | A8 |



PL-2 (L-2)

The ideal tire for compact machinery applications. Deep tread depth and directional tread pattern enhance traction in challenging off the road conditions. Offers excellent self-cleaning feature with its special lug design.

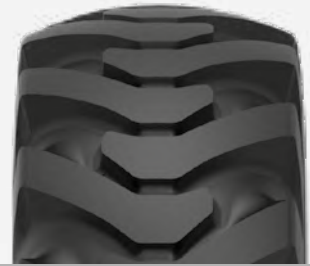


| TYRE SIZE | PR | TT/TL | LOAD INDEX | SPEED INDEX |
|-----------|----|-------|------------|-------------|
| 15.5-25 | 12 | TL | 149 | B |



PG-200 (G-2)

Specially designed for grader and construction machinery applications. Offers excellent durability thanks to its solid tread center structure. Strong nylon carcass structure promises resistance against cuts, chunks and tears. Delivers outstanding traction in challenging conditions with its open shoulders.



| TYRE SIZE | PR | TT/TL | LOAD INDEX | SPEED INDEX |
|-----------|----|-------|------------|-------------|
| 13.00-24 | 12 | TT/TL | 143 | A8 |
| 13.00-24 | 16 | TT/TL | 151 | A8 |
| 14.00-24 | 16 | TT/TL | 153 | A8 |



PG-300 (G-2)

Designed for grader and construction machinery applications. Special tread compound increases service life and improves cut resistance. Delivers enhanced durability, traction and side impact resistance and reduces operating costs. Strengthened bead and body structure makes it suitable for being retreaded.



| TYRE SIZE | PR | TT/TL | LOAD INDEX | SPEED INDEX |
|-----------|----|-------|------------|-------------|
| 16.00-24 | 16 | TL | 160 | A8 |



NB-57 (E-3)

Offers reliable performance in challenging off road conditions. Ensures resistance against chips and chunks thanks to its durable nylon carcass construction. Massive cross lugs and provides excellent traction with wide ground contact.



| TYRE SIZE | PR | TT/TL | LOAD INDEX | SPEED INDEX |
|-----------|----|-------|------------|-------------|
| 14.00-24 | 16 | TT | 153 | D |
| 14.00-24 | 20 | TL | 157 | D |
| 14.00-24 | 24 | TT | 160 | D |
| 14.00-24 | 28 | TT/TL | 168 | D |
| 14.00-24 | 32 | TT/TL | 170 | D |



NB-60 (E-3)

Delivers outstanding grip in construction sites thanks to its non-directional tread pattern design. The tread compound improves cut and chip resistance. Offers ultimate durability thanks to solid tread center structure and strong nylon carcass.



| TYRE SIZE | PR | TT/TL | LOAD INDEX | SPEED INDEX |
|-----------|----|-------|------------|-------------|
| 16.00-25 | 32 | TL | 177 | B |
| 18.00-25 | 32 | TL | 183 | B |
| 18.00-25 | 40 | TL | 187 | B |
| 18.00-33 | 32 | TL | 188 | B |



NB-57 (L-3)

Offers reliable performance in challenging off road conditions. Its durable nylon carcass construction ensures resistance against chips and chunks. Massive cross lugs and wide ground contact provides excellent traction.



| TYRE SIZE | PR | TT/TL | LOAD INDEX | SPEED INDEX |
|-----------|----|-------|------------|-------------|
| 17.5-25 | 12 | TL | 171 | A2 |
| 17.5-25 | 16 | TT/TL | 177 | A2 |
| 17.5-25 | 20 | TL | 181 | A2 |
| 20.5-25 | 16 | TL | 181 | A2 |
| 20.5-25 | 20 | TL | 186 | A2 |
| 20.5-25 | 24 | TL | 189 | A2 |
| 23.5-25 | 20 | TL | 191 | A2 |
| 23.5-25 | 24 | TL | 196 | A2 |



NB-60 (L-3)

Delivers outstanding grip in construction sites thanks to its non-directional tread pattern design. The tread compound ensures excellent cut and chip resistance. Provides outstanding durability thanks to its solid tread center structure and strong nylon carcass.



| TYRE SIZE | PR | TT/TL | LOAD INDEX | SPEED INDEX |
|--------------|----|-------|------------|-------------|
| 17.5-25 | 16 | TL | 177 | A2 |
| 20.5-25 | 20 | TL | 186 | A2 |
| 23.5-25 | 20 | TL | 191 | A2 |
| 23.5-25 | 24 | TL | 196 | A2 |
| 26.5-25 (CR) | 28 | TL | 203 | A2 |
| 26.5-25 (CR) | 32 | TL | 206 | A2 |
| 29.5-25 (CR) | 28 | TL | 207 | A2 |
| 29.5-25 (CR) | 32 | TL | 210 | A2 |

CR: Cut Resistance

UNDER DEVELOPMENT

29.5-25 34PR



NB-70 (L-3)

Delivers optimized performance on all terrains. The special compound and aggressive design of the tread pattern enhances handling throughout its exceptionally long life. Provides outstanding resistance to cuts and wears. Specifically designed to offer ultimate performance when excellent traction is needed.



| TYRE SIZE | PR | TT/TL | LOAD INDEX | SPEED INDEX |
|--------------|----|-------|------------|-------------|
| 15.5-25 | 12 | TL | 168 | A2 |
| 17.5-25 | 16 | TL | 177 | A2 |
| 17.5-25 | 20 | TL | 181 | A2 |
| 20.5-25 | 20 | TL | 186 | A2 |
| 23.5-25 | 20 | TL | 191 | A2 |
| 23.5-25 | 24 | TL | 196 | A2 |
| 26.5-25 (CR) | 28 | TL | 203 | A2 |
| 26.5-25 (CR) | 32 | TL | 206 | A2 |
| 29.5-25 (CR) | 28 | TL | 207 | A2 |
| 29.5-25 (CR) | 32 | TL | 210 | A2 |

CR: Cut Resistance



NB-70 (L-4)

Delivers outstanding grip in construction sites thanks to its non-directional tread pattern design. The tread compound ensures excellent cut and chip resistance. Provides outstanding durability thanks to its solid tread center structure and strong nylon carcass.



| TYRE SIZE | PR | TT/TL | LOAD INDEX | SPEED INDEX |
|---------------------|----|-------|------------|-------------|
| 26.5-25 (CR) | 32 | TL | 206 | A2 |
| 29.5-25 (CR) | 28 | TL | 207 | A2 |

CR: Cut Resistance



C+CARRIER (IND-4)

Specially designed for port applications. Deep and non-directional tread design delivers excellent traction and ensures long operating hours. Offers excellent durability features and high resistance against cuts, chunks and wears. Wide centerline enables riding comfort.



IMPROVED



| TYRE SIZE | PR | TT/TL | LOAD INDEX | SPEED INDEX |
|-----------------|----|-------|------------|-------------|
| 18.00-25 | 40 | TL | 207 | A5 |



C+CARRIER SMOOTH (IND-4S)

Smooth treaded tire for port applications. Optimized tread compound offers outstanding resistance to wear and ensures exceptional longevity. Promises high stability thanks to its smooth tread design. Highly resistant to abrasion.



IMPROVED



| TYRE SIZE | PR | TT/TL | LOAD INDEX | SPEED INDEX |
|-----------|----|-------|------------|-------------|
| 18.00-25 | 40 | TL | 207 | A5 |





Premium Quality IND-OTR Tires

At Petlas, we're dedicated to powering industrial progress with our IND-OTR tires. Engineered for the toughest environments, these tires are the epitome of strength and endurance.

Featuring robust construction and advanced tread designs, Petlas IND-OTR tires provide exceptional traction and wear resistance. This ensures reliable performance even under heavy loads and in challenging terrains. Their enhanced stability and longevity mean less downtime and more productivity for your operations.

Choose Petlas IND OTR tires for your heavy machinery and experience the power of performance that lasts.

DESCRIPTION

* For load capacity and inflating pressure figures on different speed rates, please consult the producer company.

** Load capacity on standard speed and standard load.

Our company is entitled to change any information in this brochure without prior notice. This brochure overrides any previous documents.

All figures are for reference and our company cannot be deemed responsible for printing errors.

** The visual content of this brochure is only representative. To find the compatible tire for your vehicle, please refer to the vehicle service or authorized tire dealer.

